

:OBLIQUE

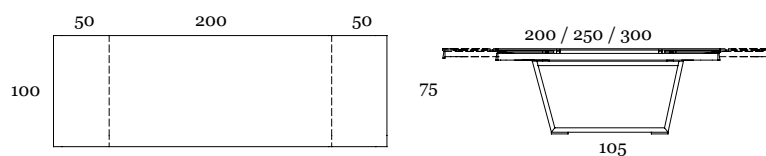
Tavoli da Pranzo



Il piano del modello Oblique, allungabile ai due lati, offre un'interessante esperienza tattile, con finiture apprezzabili non solo alla vista: le ceramiche infatti permettono di dare alla superficie una texture piacevole al tatto, oltre che riflessi e sfumature diverse. La base, con il suo andamento inclinato, sostiene il piano mantenendo una posizione centrale

Design : DARIO DELPIN

OBLIQUE CT321/200



:MATERIALI | MATÉRIAUX | MATERIALS

:LEGNO IMPIALLACCIATO

Bois placage | Veneered wood



W02
Rovere Grigio



W03
Rovere Tabacco



W04
Rovere naturale



W07
Rovere fumè



W10
Noce canaletto

:CERAMICA 3MM

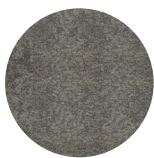
Cèramique 3 mm | Ceramic 3mm



K01
Fokos Sale
(Opaco)



K02
Fokos Terra
(Opaco)



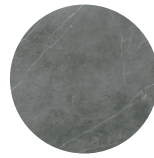
K03
Fokos Piombo
(Opaco)



K11
Pietra Savoia Antracite
(Opaco)



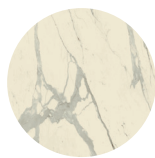
K15
Noir Desir
(Opaco)



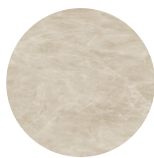
K16
Pietra Grey
(Opaco)



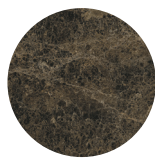
K17
Calacatta Gold
(Opaco)



K18
Bianco Statuario
(Opaco)



K19
Diamond Cream
(Opaco)



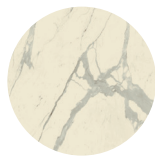
K20
Emperador
(Opaco)

:CERAMICA 5MM

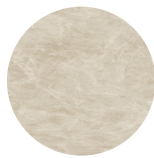
Cèramique 5mm | Ceramic 5mm



K04
Noir Desir
(Lucido)



K05
Bianco Statuario venato
(Lucido)



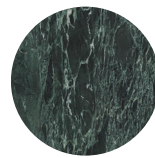
K06
Diamond Cream
(Lucido)



K13
Calacatta Gold
(Lucido)



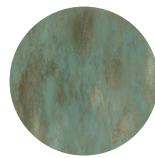
K22
Calacatta Black lucidato Starlit
(Lucido)



K23
Verde Alpi
(Lucido)



K24
Cristallo Gold lucidato Starlit
(Lucido)



K25
Ossido verderame
(Lucido)



K26
Cristallo Gold Caress
(Lucido)