

:AMON

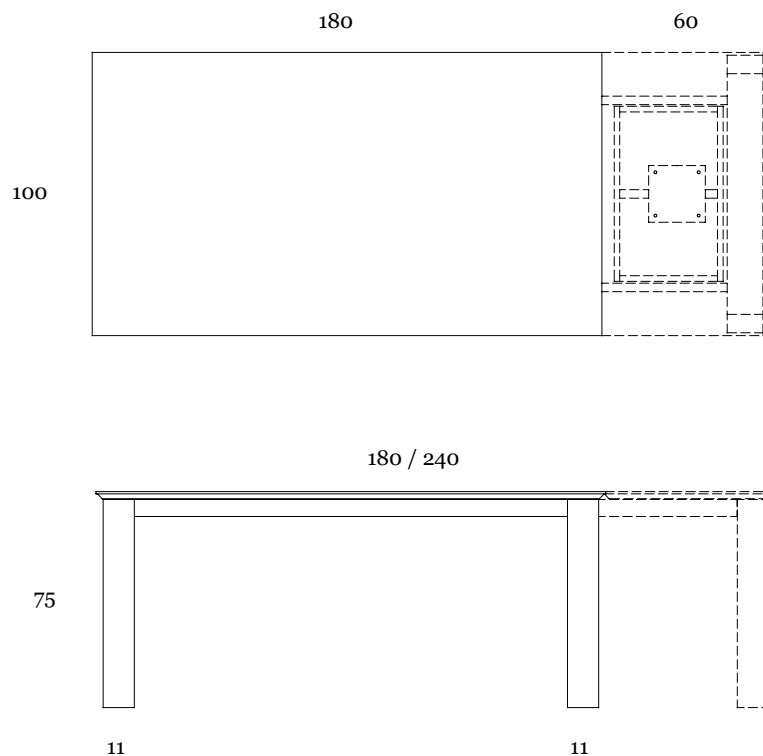
Tavoli da Pranzo



L'apparente immobilità del tavolo Amon, dalle forme simmetriche e imponenti, svanisce quando all'occorrenza si apre per aumentare la lunghezza del suo piano in ceramica. Le gambe in legno massiccio scorrono per sostenerlo in tutta la sua lunghezza e dare spazio alla quotidianità.

Design : Andrea Lucatello

AMON CT320/180

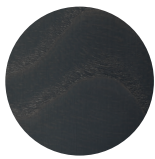


COM
PARI
ITALIAN DESIGN

:MATERIALI | MATÉRIAUX | MATERIALS

:LEGNO MASSICCIO

Bois Massif | Solid wood



W52

Frassino Grigio



W53

Frassino grigio



W54

Frassino naturale



W57

Frassino fumè



W60

Frassino canaletto

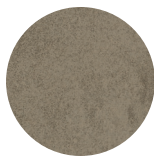
:CERAMICA 3MM

Cèramique 3 mm | Ceramic 3mm



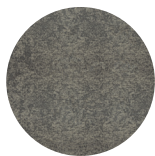
K01

*Fokos Sale
(Opaco)*



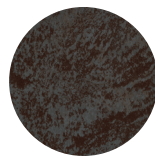
K02

*Fokos Terra
(Opaco)*



K03

*Fokos Piombo
(Opaco)*



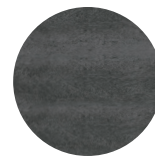
K09

*Oxide Nero
(Opaco)*



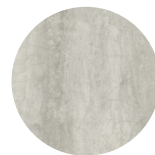
K10

*Oxide Bianco
(Opaco)*



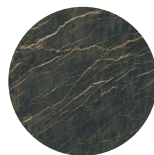
K11

*Pietra Savoia Antracite
(Opaco)*



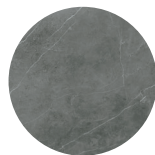
K12

*Pietra di Savoia Grigio
Perla (Opaco)*



K15

*Noir Desir
(Opaco)*



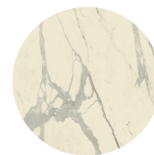
K16

*Pietra Grey
(Opaco)*



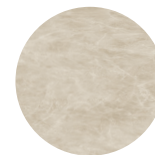
K17

*Calacatta Gold
(Opaco)*



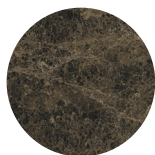
K18

*Bianco Statuario
(Opaco)*



K19

*Diamond Cream
(Opaco)*



K20

*Emperador
(Opaco)*

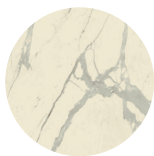
:CERAMICA 5MM

Cèramique 5mm | Ceramic 5mm



K04

*Noir Desir
(Lucido)*



K05

*Bianco Statuario venato
(Lucido)*



K06

*Diamond Cream
(Lucido)*



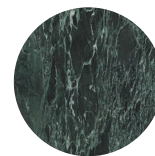
K13

*Calacatta Gold
(Lucido)*



K22

*Calacatta Black lucidato Starlit
(Lucido)*



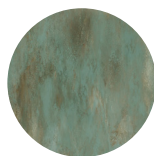
K23

*Verde Alpi
(Lucido)*



K24

*Cristallo Gold lucidato Starlit
(Lucido)*



K25

*Ossido verderame
(Lucido)*



K26

*Cristallo Gold Caress
(Lucido)*